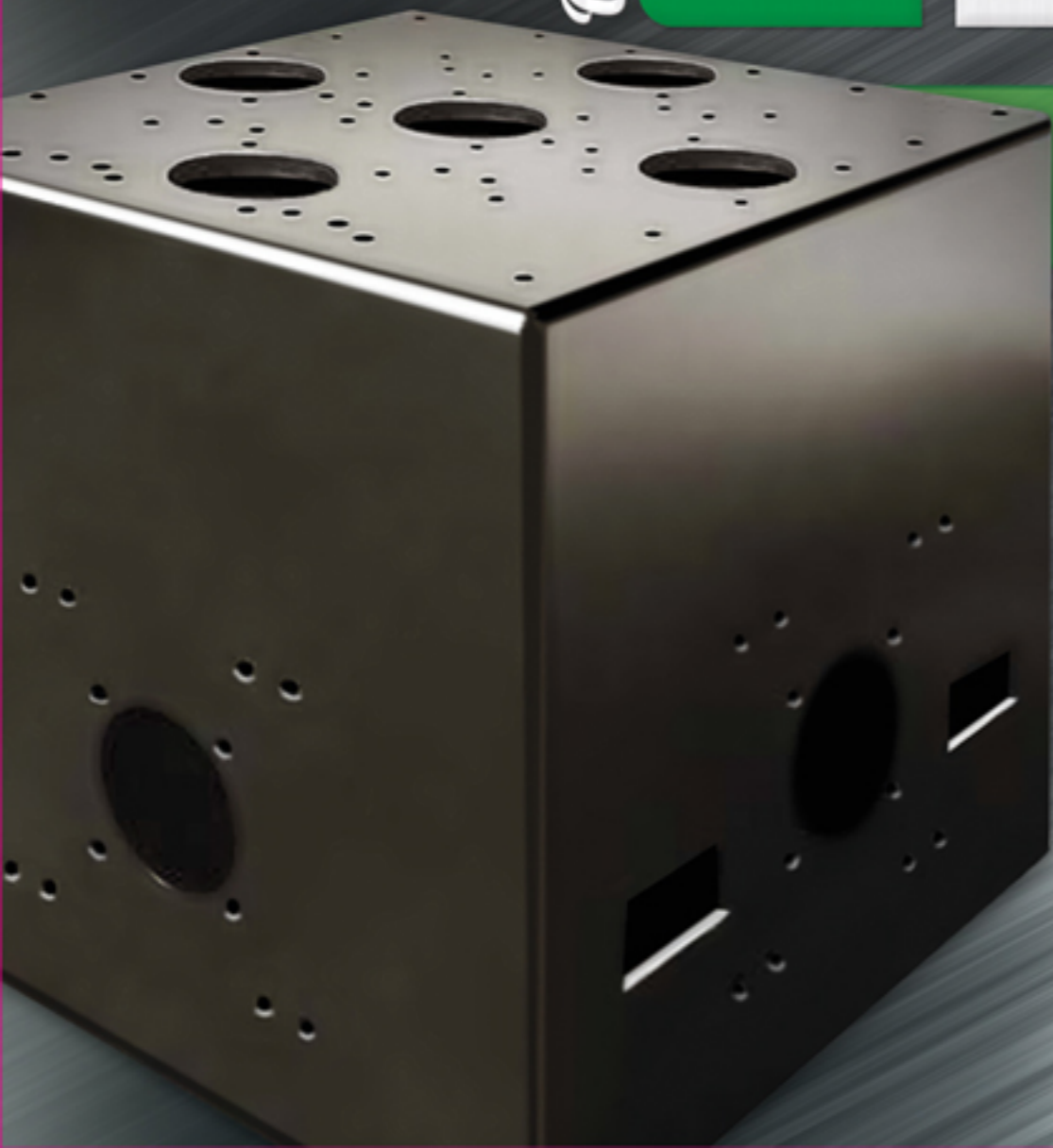


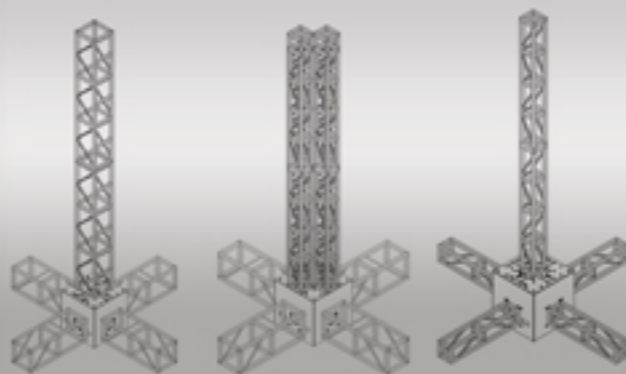
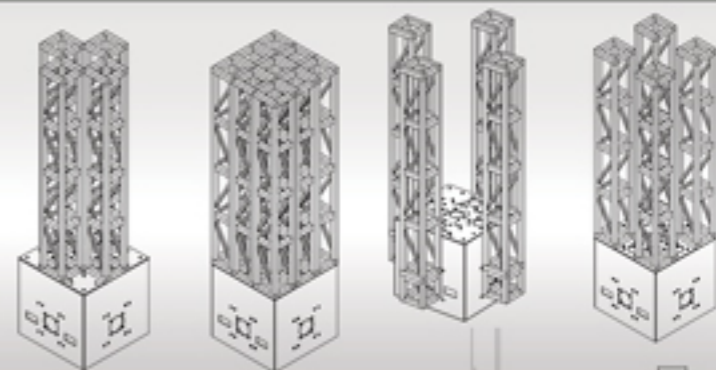
Original

# G BLOCK



This innovative ballast design has revolutionized the staging industry with its fully engineered, multi-functional properties, used for truss grids, truss arches, and dead weight.

- Weighs 3500lbs
- 36" wide x 36" deep x 36" tall
- Powder coated black
- Bolt pattern for 12" x 12" box truss (5 sides)
- Bolt pattern for 20.5" x 20.5" box truss (5 sides)
- Forklift accessible (2 sides)
- Receives screw jacks to level



- Fully enclosed in steel
- Cement filled
- Concrete will not chip off or alter ballast integrity
- Bolt truss in (4) horizontal directions to create outriggers
- Bolt truss vertically for tower truss
- Ballast used for truss grids, truss arches, and dead weight
- Patent pending

